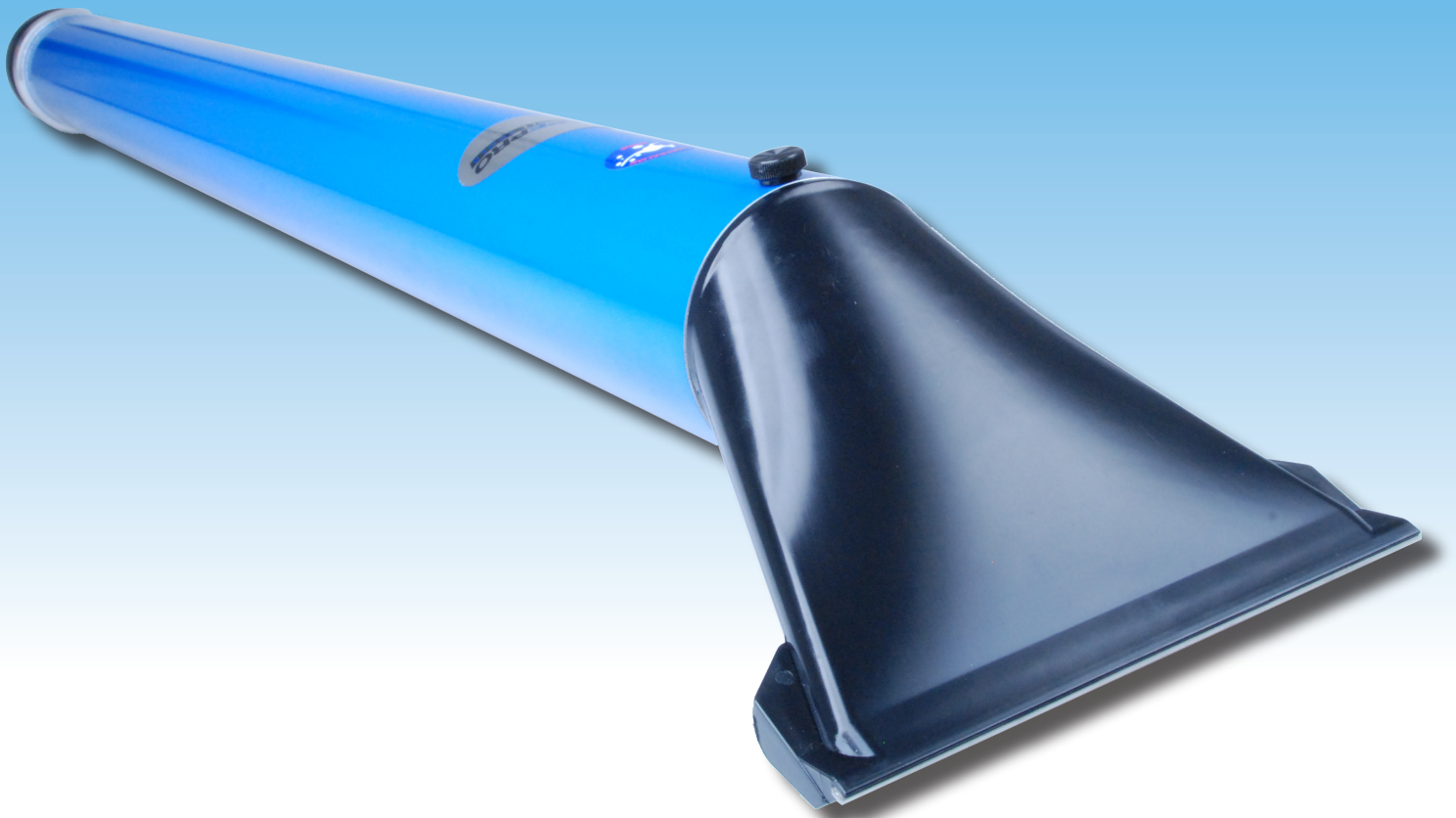


TAPEPRO

DRYWALL TOOLS™



MUDSHARK

FLAT APPLICATOR™

FLAT APPLICATOR COMPOUND TUBE

FLAT APPLICATOR COMPOUND TUBE

Code: FA-CT

The Tapepro Flat Applicator Tube is a simple and robust tool with two main purposes:

1. To apply compound to flat recess joints prior to taping.
2. As a quick fill pump to fill flat boxes and mud boxes.

Features:

- Robust aluminium main tube, powder coated for durability
- Piston head features two lip seals for positive sealing
- Quick release nozzle and piston rod for easy cleaning
- O Ring seal behind the nozzle
- High flow nozzle made from industrial plastic with special mud wings
- Includes replaceable 135mm blade (same material as flat box blades)
- Flat Applicator Nozzle (FAN) also available separately



USING THE FLAT APPLICATOR

For Taping

1. Prepare the joint compound to be used - it can be thicker than you would normally use in a machine.
2. Ensure the Flat Applicator is clean and that the seals are not dry or damaged.
3. With the piston rod fully compressed, place the head of the flat applicator into the joint compound.
4. Pull up on the piston rod to draw the compound up into the tube.
5. Wipe off excess compound on the side of the container.
6. Place the flat applicator onto the joint and centralise. Hold at an angle so that the blade is in contact with the wall and the outlet face is roughly parallel to the wall.
7. Push the piston rod in until compound is seen on the underside of the head.
8. Move the flat applicator along the joint whilst maintaining flow.
9. Once the joint recess is full, apply paper tape and bed in as usual. Do not allow compound to dry before applying tape.



For Filling

1. Follow the first five points for taping shown above.
2. With the flat box laying with blade and compound slot uppermost, place the flat applicator nozzle into the flat box compound slot.
3. Fill the flat box by pushing in on the piston rod.



CLEANING

Your Flat Applicator Compound Tube should be cleaned after each use to maximise the lifespan and maintain optimal performance.

Use water and a brush - do not use solvents.

MAINTENANCE

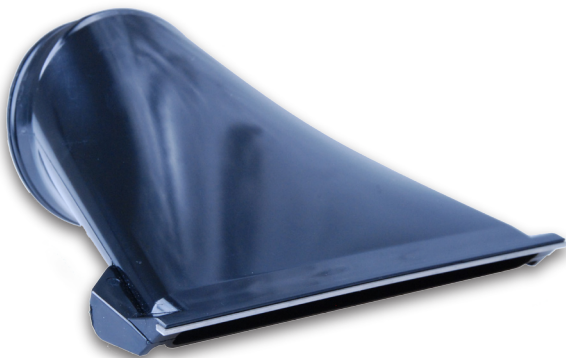
To maintain your Flat Applicator Compound Tube, follow these points:

- Thoroughly clean the tool after use.
- Ensure that all joint compound is removed.
- Use a silicone spray to protect and lubricate. Do not use solvent based products.
- Lubricate the piston wipers and O ring.
- Replace the O ring if damaged.
- Replace the blade when worn.

All replacement parts are available from your local plasterboard distributor or Tapepro Drywall Tools. For your nearest distributor please visit our website: www.tapepro.com or call Tapepro Drywall Tools on +61 7 5520 6022.

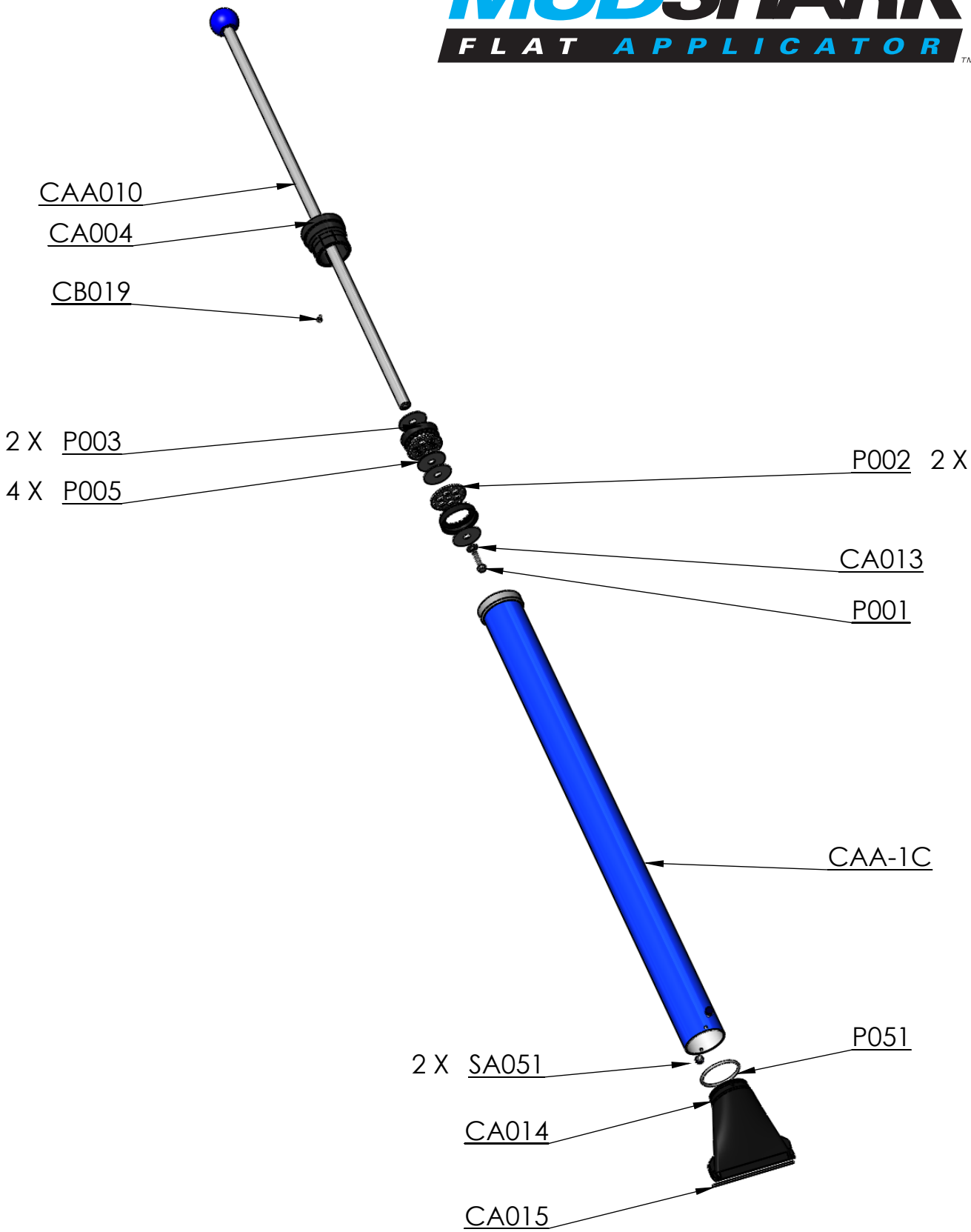
WARRANTY

All manufacturing faults are covered under the Tapepro warranty. All non wear parts are covered under a 3 year warranty.



MUDSHARK

FLAT APPLICATOR™



TAPEPRO

DRYWALL TOOLS™