

THE NEW HIGH PERFORMANCE LONG PLUG



MAXIMUM PULL-OUT VALUES
extraordinary performance on
all base materials



UP TO THREE EMBEDMENT DEPTHS
extreme versatility and significant
reduction in installation time



INCREASED EXPANSION
designed for facades and
heavy carpentry



**ETA
ASSESSED**



FRIULSIDER



3DG COATING



National Code Compliant

ETA-19/0245



European Technical Assessment



Fire Rated Fasteners

FRIULSIDER FM-X3 Nylon Frame Fixing Non Collared Hex Flanged

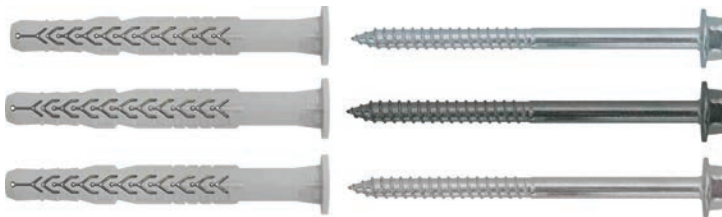
ZINC INTERNAL

GAL EXTERNAL

316 SS EXTERNAL



Part No.	Part No.	Part No.	Description	mm	mm	mm	mm	mm	mm	mm	Qty	Qty
	FMX3THNF10060G (64603c10060)		10 x 60	10	7	68	50	10	T40 A/F 13		50	500



3DG COATING

INOX A4 70



National Code Compliant

ETA-19/0245



European Technical Assessment



Fire Rated Fasteners

FRIULSIDER FM-X3 Nylon Frame Fixing Collared Hex

ZINC INTERNAL

GAL EXTERNAL

316 SS EXTERNAL



Part No.	Part No.	Part No.	Description	mm	mm	mm	mm	mm	mm	mm	Qty	Qty
FMX3TH10060 (64703b10060)	FMX3TH10060G (64703c10060)		10 x 60	10	7	68	50	10	T40 A/F 13		50	500
FMX3TH10080 (64703b10080n6)	FMX3TH10080G (64703c10080n6)	FMX3TH10080SS (64703010080n6)	10 x 80	10	7	88	50	30	T40 A/F 13		50	500
FMX3TH10100 (64703b10100n6)	FMX3TH10100G (64703c10100n6)	FMX3TH10100SS (64703010100n6)	10 x 100	10	7	108	50	50	T40 A/F 13		50	500
FMX3TH10120 (64703b10120n6)	FMX3TH10120G (64703c10120n6)	FMX3TH10120SS (64703010120n6)	10 x 120	10	7	128	50	70	T40 A/F 13		50	500
FMX3TH10140 (64703b10140n6)	FMX3TH10140G (64703c10140n6)	FMX3TH10140SS (64703010140n6)	10 x 140	10	7	148	50	90	T40 A/F 13		50	500
		FMX3TH10160SS (64703010160n6)	10 x 160	10	7	168	50	110	T40 A/F 13		50	500



3DG COATING



National Code Compliant

ETA-19/0245



European Technical Assessment



Fire Rated Fasteners

FRIULSIDER FM-X3 Nylon Frame Fixing Countersunk

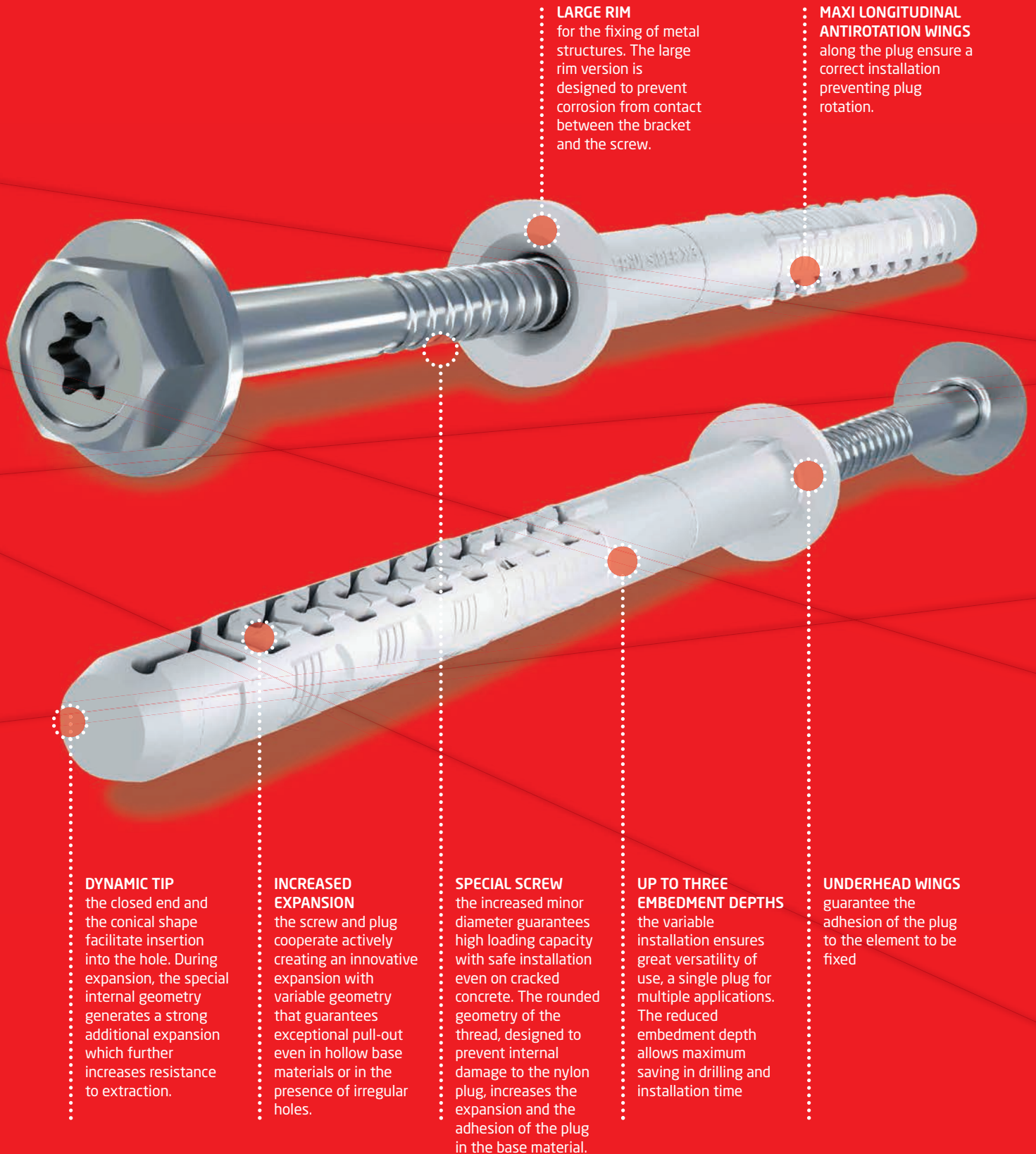
ZINC INTERNAL

GAL EXTERNAL

316 SS EXTERNAL



Part No.	Part No.	Part No.	Description	mm	mm	mm	mm	mm	mm	mm	Qty	Qty
	FMX3C10060G (64602c10060n6)		10 x 60	10	7	68	50	10	T40		50	500
	FMX3C10080G (64602c10080n6)		10 x 80	10	7	88	50	30	T40		50	500
	FMX3C10100G (64602c10100n6)		10 x 100	10	7	108	50	50	T40		50	500
	FMX3C10120G (64602c10120n6)		10 x 120	10	7	128	50	70	T40		50	500
	FMX3C10140G (64602c10140n6)		10 x 140	10	7	148	50	90	T40		50	500
	FMX3C10160G (64602c10160n6)		10 x 160	10	7	168	50	110	T40		50	500



LARGE RIM
for the fixing of metal structures. The large rim version is designed to prevent corrosion from contact between the bracket and the screw.

MAXI LONGITUDINAL ANTIROTATION WINGS
along the plug ensure a correct installation preventing plug rotation.

DYNAMIC TIP
the closed end and the conical shape facilitate insertion into the hole. During expansion, the special internal geometry generates a strong additional expansion which further increases resistance to extraction.

INCREASED EXPANSION
the screw and plug cooperate actively creating an innovative expansion with variable geometry that guarantees exceptional pull-out even in hollow base materials or in the presence of irregular holes.

SPECIAL SCREW
the increased minor diameter guarantees high loading capacity with safe installation even on cracked concrete. The rounded geometry of the thread, designed to prevent internal damage to the nylon plug, increases the expansion and the adhesion of the plug in the base material.

UP TO THREE EMBEDMENT DEPTHS
the variable installation ensures great versatility of use, a single plug for multiple applications. The reduced embedment depth allows maximum saving in drilling and installation time

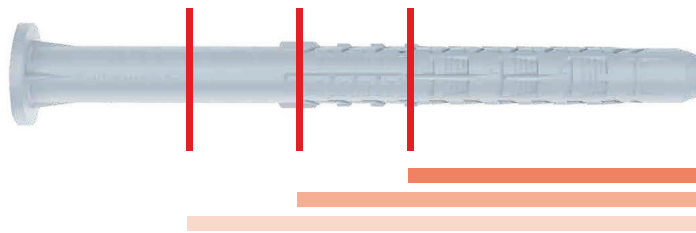
UNDERHEAD WINGS
guarantee the adhesion of the plug to the element to be fixed

THE NEW HIGH PERFORMANCE LONG PLUG UP TO 3 EMBEDMENT DEPTHS EXTREME VERSATILITY AND SIGNIFICANT REDUCTION IN INSTALLATION TIME.

The reduced installation allows maximum saving in drilling and installation time.

Plug Diameter	Reduced Embedment Depth	Standard Embedment Depth	Increased Embedment Depth
10	50mm	70mm	90mm*

*Only for aerated concrete



Performance data

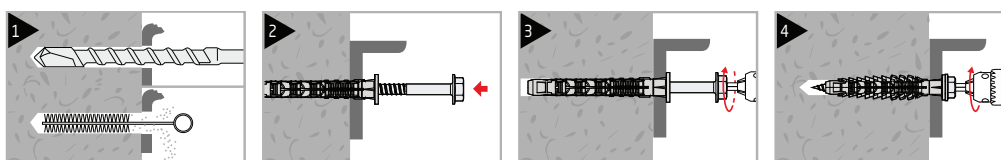
Nominal embedment depth	h_{nom}		Anchor Ø10mm		
			50mm	70mm	90mm
Concrete C16/20 - Tension	N_{rd}	kN	1.50	2.40	-
	N	kN	1.10	1.70	-
Minimum spacing	S_{min}	mm	210	210	-
Minimum edge distance	C_{min}	mm	70	70	-
Minimum thickness of concrete	h_{min}	mm	100	120	-
Cell like clay brick ≥ 8 MPa - Tension	N_{rd}	kN	0.36	0.36	-
	N	kN	0.26	0.26	-
Minimum spacing	S_{min}	mm	250	250	-
Minimum edge distance	C_{min}	mm	100	100	-
Minimum thickness of base material	h_{min}	mm	120	120	-
Aerated concrete AAC ≥ 2.5 MPa - Tension	N_{rd}	kN		0.20	0.30
	N	kN		0.14	0.20
Minimum spacing	S_{min}	mm		250	250
Minimum edge distance	C_{min}	mm		100	100
Minimum thickness of AAC	h_{min}	mm		240	240
Max. Torque on concrete	Zinc plated screw			15	
	3DG / anti-corrosion plating	T_{max}	Nm	15	
	Inox / stainless steel			20	

N_{rd} = Design tension capacity.

N = Recommended tension capacity.

Note: The above load values refer to a working temperature of $\leq 40^{\circ}C$.

Installations instructions



ICCONS® PTY LTD

VICTORIA - HEAD OFFICE
383 Frankston Dandenong Road,
Dandenong South, Vic, 3175

P: **03 9706 4344**

F: **03 9768 3329**

NSW Branch
Unit A, 17 Seddon Street,
Bankstown,
New South Wales, 2200

P: **02 9791 6869**

F: **02 9790 8404**

QLD Branch
42-44 Nealdon Drive
Meadowbrook,
Queensland, 4131

P: **07 3200 6455**

F: **07 3299 7548**

S.A Branch
29-31 Weaver Street,
Edwardstown,
South Australia 5039

P: **08 8234 5535**

F: **08 8354 4689**

W.A. Branch
90 Christable Way, Landsdale,
Western Australia, 6065

P: **08 6305 0088**

F: **08 6305 0011**

NORTHERN TERRITORY
Unit 2, 14 Menmuir Street,
Winnellie,
Northern Territory 0820

P: **08 8947 2758**

NEW ZEALAND
Sesto Fasteners
5E Piermark Road, Albany,
Auckland,

New Zealand 0630

P: **+64 9415 8564**

E: sestofasteners@gmail.com

ICCONS (Thailand) Co. Ltd.
55 Phetkasem 62/3, Bangkokhae,
Bangkok 0160

P: **+ 66 2 801 0764**

F: **+ 66 2 801 0764**

M: **+ 66 8 1 710 8745**

E: icconsthailand@hotmail.com