



ANCHORING

friulsider



X1 The absolute Plug.

ENDLESS BASE MATERIAL, ENDLESS APPLICATIONS



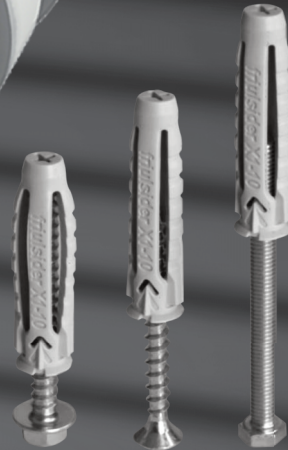
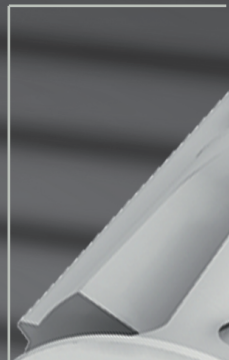
Collapsible rim



Dynamic Geometry



Extra thin countersunk rim



Hex head wood screws

Chipboard screws

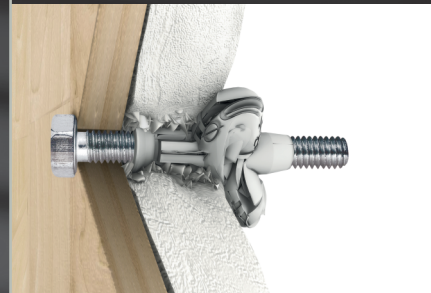
Machine threaded screws
and Threaded rod



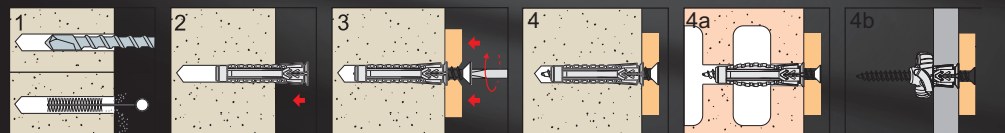
Solid base material



Hollow base material



Plasterboard base material



**friulsider X1®** The Absolute Plug**NEW**

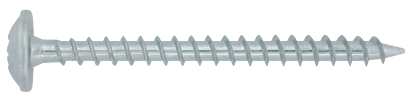
Part No.	Description	mm	mm	mm	metric	qty	qty
FMX1P05025 (60070005025)	5 x 25mm Plug only	5	25	3.5 - 4	n/a	100	3200
FMX1P06030 (60070006030)	6 x 30mm Plug only	6	30	4.5	M4	100	3200
FMX1P08040 (60070008040)	8 x 40mm Plug only	8	40	5 - 6	M5	100	1600
FMX1P10050 (60070010050)	10 x 50mm Plug only	10	50	6	M6	50	800
FMX1P12060 (60070012060)	12 x 60mm Plug only	12	60	8	M8	25	400
FMX1P14070 (60070014070)	14 x 70mm Plug only	14	70	10	M10	20	320

**friulsider X1®** with Hex Head Screw Carbon Steel Hex Head Screw - Zinc Clear

ZINC INTERNAL

NEW

Part No.	Description	mm	mm	mm	mm	qty	qty
FX1PH08040 (60071b08040)	8 x 40mm Plug with Hex Head Screw	8	40	6	50	100	1600
FX1PH10050 (60071b10050)	10 x 50mm Plug with Hex Head Screw	10	50	6	60	50	800
FX1PH12060 (60071b12060)	12 x 60mm Plug with Hex Head Screw	12	60	8	70	25	400
FX1PH14070 (60071b14070)	14 x 70mm Plug with Hex Head Screw	14	70	10	80	20	320

**friulsider X1®** with Pan Head Screw Carbon Steel Pan Head Screw - Zinc Clear

ZINC INTERNAL

NEW

Part No.	Description	mm	mm	mm	mm	qty	qty
FX1PP05025 (60072b05025)	5 x 25mm Plug with Wide Pan Head Screw	5	25	3.5	30	100	1600
FX1PP06030 (60072b06030)	6 x 30mm Plug with Wide Pan Head Screw	6	30	4.5	40	100	1200
FX1PP08040 (60072b08040)	8 x 40mm Plug with Wide Pan Head Screw	8	40	5	50	50	600